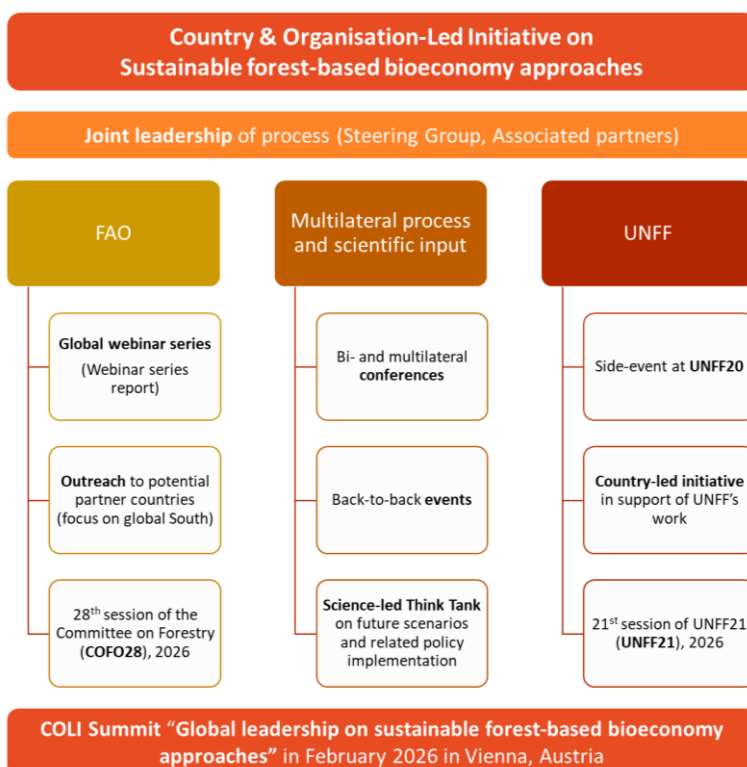


A Country & Organisation-Led Initiative (COLI) on Sustainable Forest-based Bioeconomy Approaches - Short overview -

There is an urgent need to **scale-up innovations for climate adaptation and mitigation** that promote the development of **carbon-neutral economies** while also generating decent employment and supporting the livelihoods of millions of people. The **sustainable bioeconomy** represents an integrated approach that leverages biological resources to replace fossil fuel-based materials and processes, driving progress across economic sectors while balancing economic growth, environmental sustainability, and social equity.

Forest products harvested from sustainably and responsibly managed forests are increasingly recognized as a critical element of the bioeconomy. However, the capacity to sustainably manage forests for the supply of forest products to the growing bioeconomy requires a careful and complex balance of interrelated objectives related to social well-being, economic development, and environmental values.

Against this background, a **Country and Organization-Led Initiative (COLI) on Sustainable Forest-based Bioeconomy Approaches**, initiated by the Federal Ministry of Agriculture, Forestry, Regions and Water Management of Austria, together with Partner Countries and Organisations, is aiming to further **develop the forest-based bioeconomy worldwide**. By building on scientific evidence, and on the latest developments in the forest and wood sector, it also fosters the possibility to continue the global dialogue on wood solutions and other forest-based bioeconomy approaches. **Country representatives and other stakeholders are invited to join forces.**



COLI is contributing to the proposed actions of the omnibus resolution of the **19th United Nations Forum on Forests** as well as the latest work programme of **FAO's Committee on Forestry**. The main aim of COLI is to create a useful **multilateral dialogue** to foster the exchange on sustainable forest-based bioeconomy approaches by connecting as many interested actors as possible and making best use of synergies.

For more information contact
magdalena.lackner-unger@bml.gv.at,
raphaela.hellmayr@bml.gv.at